

FBT-10420

10.4 inch Open Frame LCD Monitor



Features

- RoHS Compliant, meets UL, CSA, TUV, FCC B, VCCI B, CE TCO 99, TUV Ergo, EPA Energy Star certifications
- Kiosk, equipment and instrument drop-in design
- Superior viewing angles, contrast ratio and brightness
- Sturdy and ventilation consideration structure

Options

- Durable Resistive and Surface Acoustic Wave Touchscreen
- DVI, Composite and BNC video input
- MP-01, MP-02 signage players

Touchscreen Options

- FBT-10420TEAR 5-Wire Resistive RS232 Touch O/F Monitor
- FBT-10420TEARU 5-Wire Resistive USB Touch O/F Monitor
- FBT-10420TEAS SAW RS232 Touch O/F Monitor
- FBT-10420TEASU SAW USB Touch O/F Monitor

Specifications

LCD Panel

TFT Active Matrix Color
 10.4 inch diagonal viewable
 SVGA 800 x 600 resolution (maximum)
 0.264 x 0.264 mm pixel pitch
 262,000 color display
 230 nit brightness (typical, 80-90% with touchscreen)
 80% luminance uniformity (minimum)
 500:1 contrast ratio (typical at 25°C)
 35 ms response time (typical)
 ±60°L/R, 50°U/D
 20,000 hours MTBF (minimum at 25°C)

Video Interface

VGA compatible analog RGB
 24-54 kHz horizontal scan
 50-90 Hz vertical refresh
 OSD (On Screen Display) keys

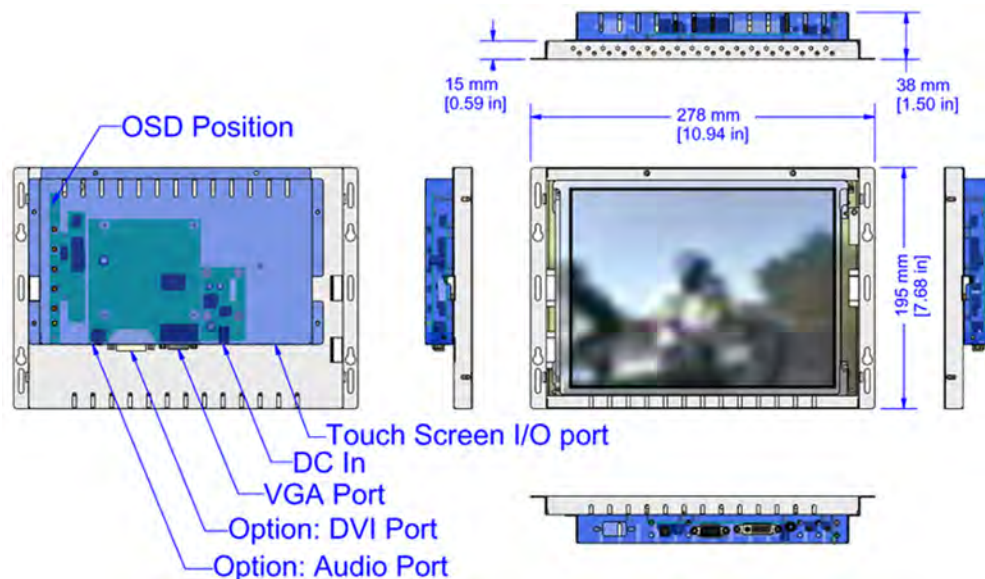
Mechanical and Environment

Operation Temperature: 0~50°C [32~122°F]
 Storage Temperature: -20~60°C [-4~140°F]
 Humidity: 80% maximum
 278 x 195 x 36.3 mm [10.94 x 7.68 x 1.43 inch]
 1.1 kg [2.5 lbs]

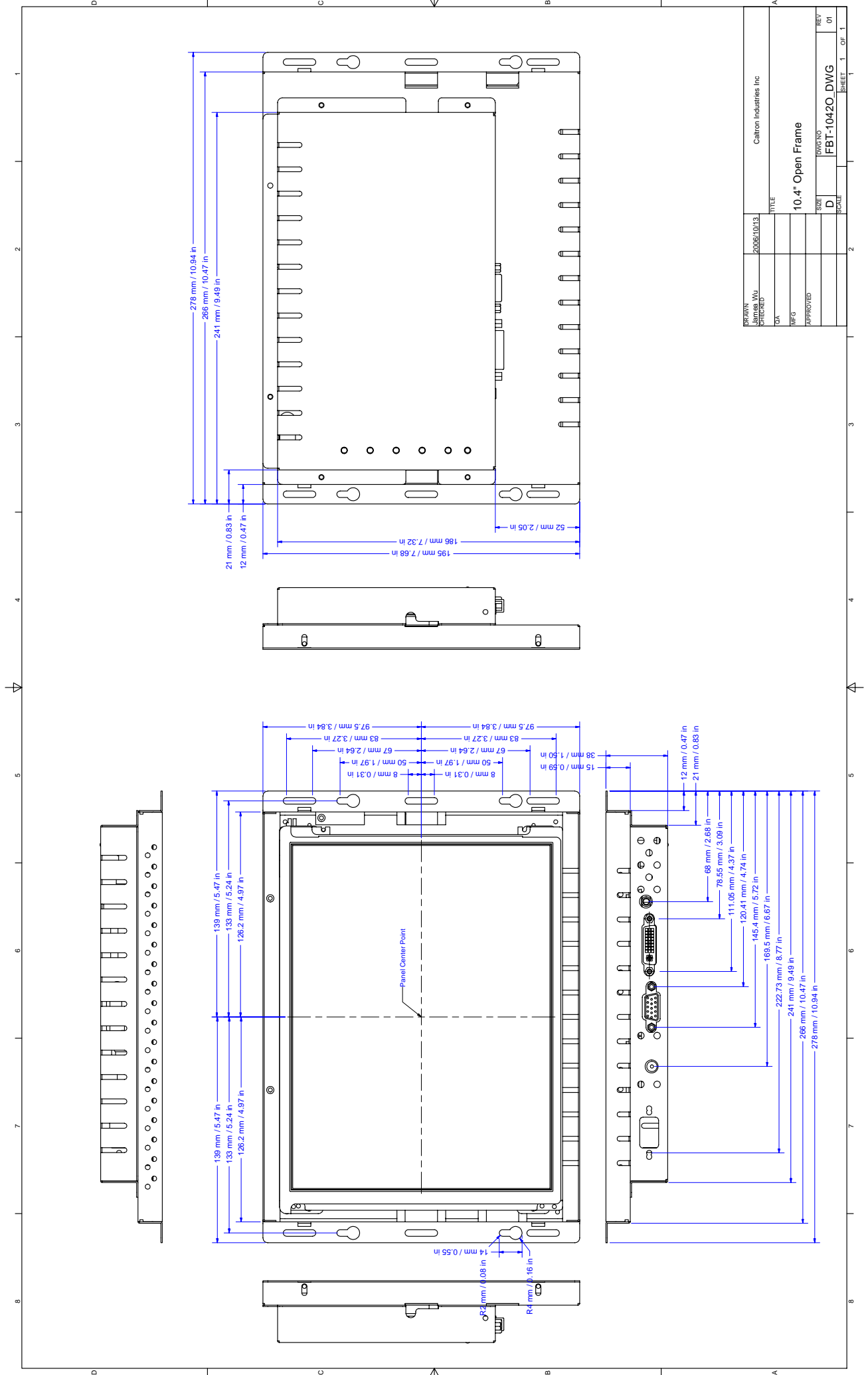
Power Management

VESA DPMS Standard
 5W sleep mode, 34.6W normal mode
 12V/2A, 24W, Universal Input Adapter

Technical Data



Caltron Industries Inc
 Display Solutions Provider Since 1997



DRAWN	2008/10/13	DATE	2
DRAWN BY	Jiangbo Wu	DATE	2
CHECKED	CA	DATE	2
APPROVED	WFG	DATE	2
SCALE	D	REV	01
DRAWING NO		FBI-10420_DWG	
TITLE		10.4" Open Frame	
Catron Industries Inc			
SHEET 1 OF 1			