

FBT-06510

6.5 inch Open Frame LCD Monitor



Features

- RoHS Compliant, meets UL, CSA, TUV, FCC B, VCCI B, CE TCO 99, TUV Ergo, EPA Energy Star certifications
- Kiosk, equipment and instrument drop-in design
- Superior viewing angles, contrast ratio and brightness
- Sturdy and ventilation consideration structure

Options

- Durable Resistive and Surface Acoustic Wave Touchscreen
- DVI, Composite and BNC video input
- MP-01, MP-02 signage players

Touchscreen Options

- FBT-06510TEAR 5-Wire Resistive RS232 Touch O/F Monitor
- FBT-06510TEARU 5-Wire Resistive USB Touch O/F Monitor
- FBT-06510TEAS SAW RS232 Touch O/F Monitor
- FBT-06510TEASU SAW USB Touch O/F Monitor

Specifications

LCD Panel

TFT Active Matrix Color
 6.5 inch diagonal viewable
 VGA 640 x 480 resolution (maximum)
 0.069 x 0.207 mm pixel pitch
 16 million color display
 500 nit brightness (typical, 80-90% with touchscreen)
 80% luminance uniformity (minimum)
 450:1 contrast ratio (typical at 25°C)
 26 ms response time (typical)
 ±70°L/R, 60°U/D
 50,000 hours MTBF (minimum at 25°C)

Video Interface

VGA compatible analog RGB
 24-82 kHz horizontal scan
 50-75 Hz vertical refresh
 OSD (On Screen Display) keys

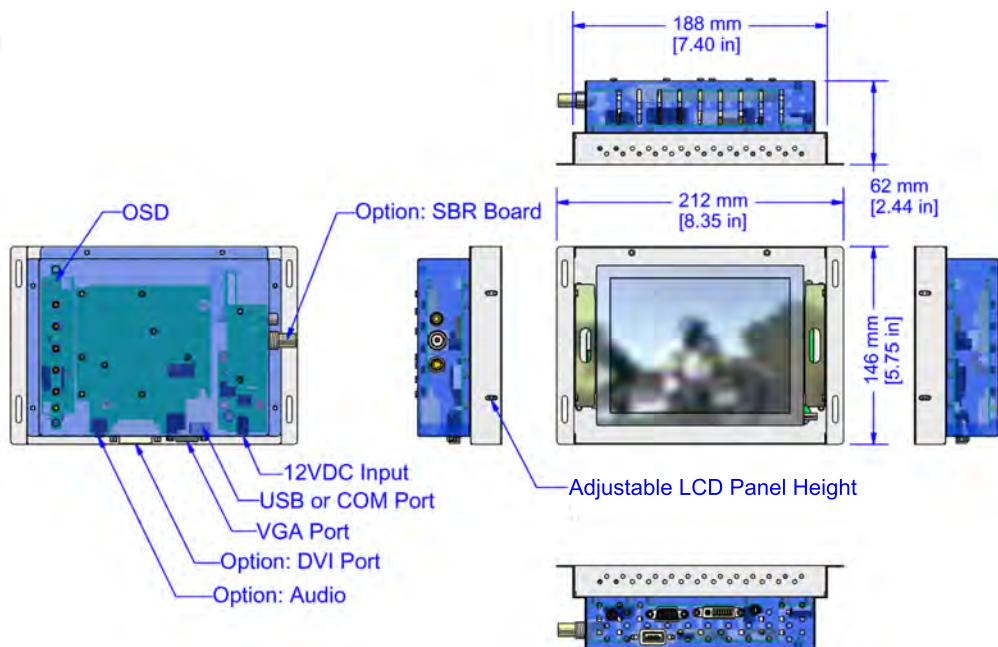
Mechanical and Environment

Operation Temperature: 0~50°C [32~122°F]
 Storage Temperature: -20~60°C [-4~140°F]
 Humidity: 80% maximum
 212 x 146 x 62 mm [8.35 x 5.75 x 2.44 inch]
 1 kg [2.0 lbs]

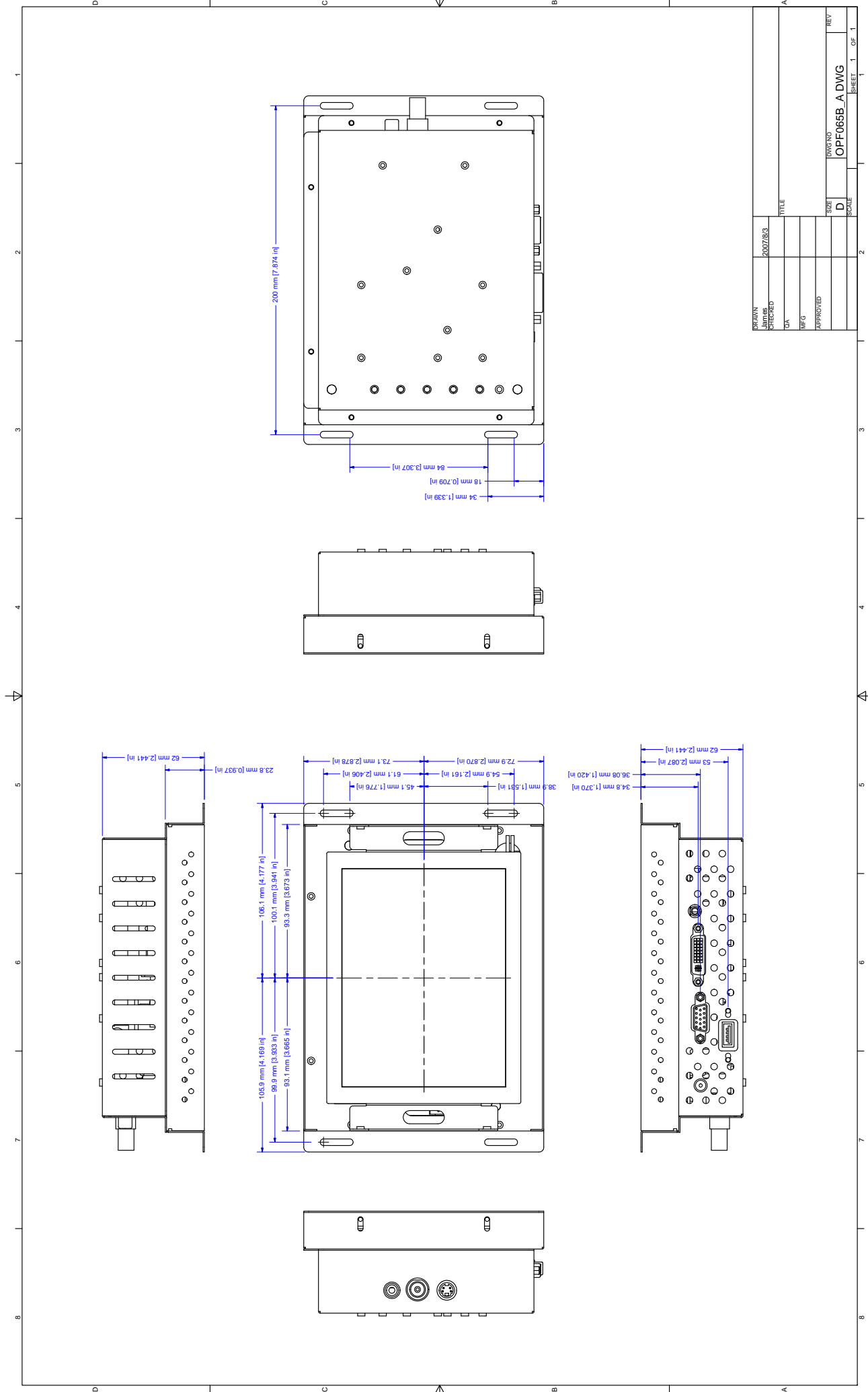
Power Management

VESA DPMS Standard
 5W sleep mode, 34.6W normal mode
 12V/2A, 24W, Universal Input Adapter

Technical Data



Caltron Industries Inc
 Display Solutions Provider Since 1997



DRAWN	2007/8/3	TITLE	
CHECKED		DATE	
DATE		SCALE	
APPROVED		SIZE	D
		DWG NO	OPF065B_A DWG
		REV	
		SHEET	1 OF 1